

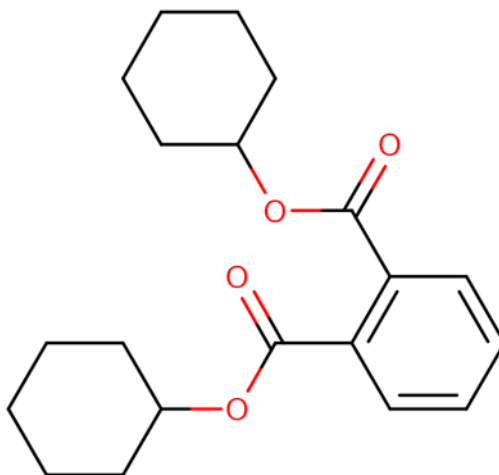


Risk Evaluation for Dicyclohexyl Phthalate (DCHP)

Supplemental Information File:

Supplemental Information on Benchmark Dose (BMD) Modeling Results in the Human Health Hazard Assessment

CASRN 84-61-7



December 2025

The following files are not available in Regulations.gov. In order to access any of these files, please contact the EPA Docket Center, Public Reading Room to view or receive a copy of one or more of these files. Requests for copies can be made as follows:

In Person/Writing: Environmental Protection Agency, Docket Center, 1301 Constitution Ave NW, Room 3334, Washington, D.C. 20004. The Docket Center's hours of operations are 8:30 a.m. – 4:30 p.m., Monday – Friday (except Federal holidays). Telephone: 202-566-1744 Email: Docket-CustomerService@epa.gov .